

EUPHORBIA TERRACINA

Common name: Geraldton carnation weed, false caper, terracina spurge

Habitat: Beaches, roadsides, slopes

Locations: Established in coastal regions from Malibu to Palos Verdes, inland up Yerba Buena and Mulholland Road, up Topanga Canyon and Old Topanga Canyon roads, over the mountains into Rancho Sierra Vista, and westward to highway 150 in Ventura County.



www.northwestweeds.nsw.gov.au

Euphorbia terracina is a yellowish- green, bushy, upright perennial spurge, which grows up to 3 feet tall. It has a robust vertical taproot. The shrub-like herb consists of several green to reddish, slender leafy stems which branch at the top to produce 1 to 5 flower stems. The plants spread by seeds that are scattered over a distance of several meters when the ripe fruits burst open. Flowers are highly modified, yellow/green cup like structures, quite distinct from the bright green leaves. It forms dense thickets which out compete native species for space, light and nutrients. Its rapid growth and prolific seeding gives it the potential to invade areas of healthy native habitat.

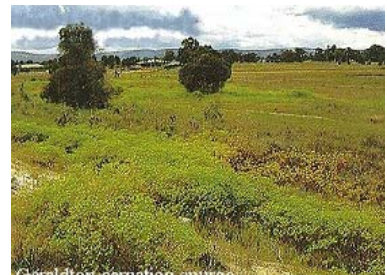
- It is a huge pest in Australia
- It is a Q rated weed
- It threatens habitat for endangered species
- It has toxic sap, which causes temporary blindness and skin irritation.
- It forms monotypic stands within openings in coastal sage scrub
- No native insects or animals have been found feeding on it.
- It has explosive seed dispersal
- Resprouts readily when cut, grazed, or burned
- Seed production sustained over 3 or more months within a population annually.



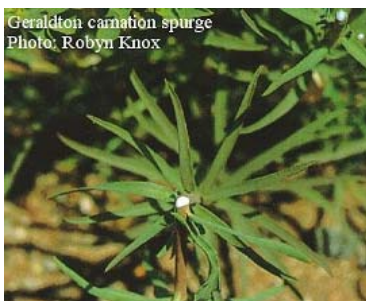
www.lacnps.org



www.sccnps.org



www.cdfa.ca.gov



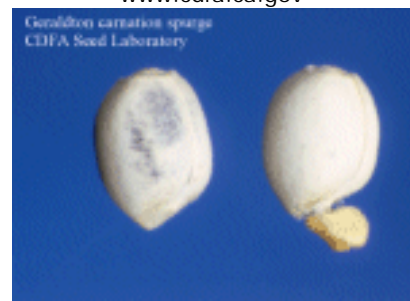
Geraldton carnation spurge
Photo: Robyn Knox

www.cdfa.ca.gov



Euphorbia terracina
Invasive weed

www.cnpsci.org



Geraldton carnation spurge
CDFA Seed Laboratory

www.cdfa.ca.gov



Ventura County Resource Conservation District

P.O. Box 147 - 3380 Somis Road - Somis, California 93066

Phone (805) 386-4685 - Fax: (805) 386-4890